


STAY-FORM[®]

Stay-in-place Concrete Form

★ ★ ★ ★ ★
Made in the
USA
Meets ARRA HR 1 EH,
Section 1110




blindside walls



pile caps



ductbanks



bulkheads

QUALITY PRODUCTS – COAST TO COAST

A M I C O[®]

A GIBRALTAR INDUSTRIES COMPANY 

TABLE OF CONTENTS

Product Information Page 1

Blindside Walls Pages 2-4

BulkheadsPage 5

Pile Caps.....Page 6

Grade Beams.....Page 7

Ductbanks.....Page 8

BridgesPage 9

Shotcrete Page 10

Test Data..... Pages 11-12

Installation Notes Page 13



STAYS IN PLACE
35% LABOR SAVINGS
NO STRIPPING OF FORMS

QUALITY PRODUCTS – COAST TO COAST



A GIBALTAR INDUSTRIES COMPANY 

ALABAMA METAL INDUSTRIES CORPORATION

3245 Fayette Avenue • Birmingham, AL 35208

Phone (205) 787-2611 • (800) 366-2642 • Fax (205) 786-6527

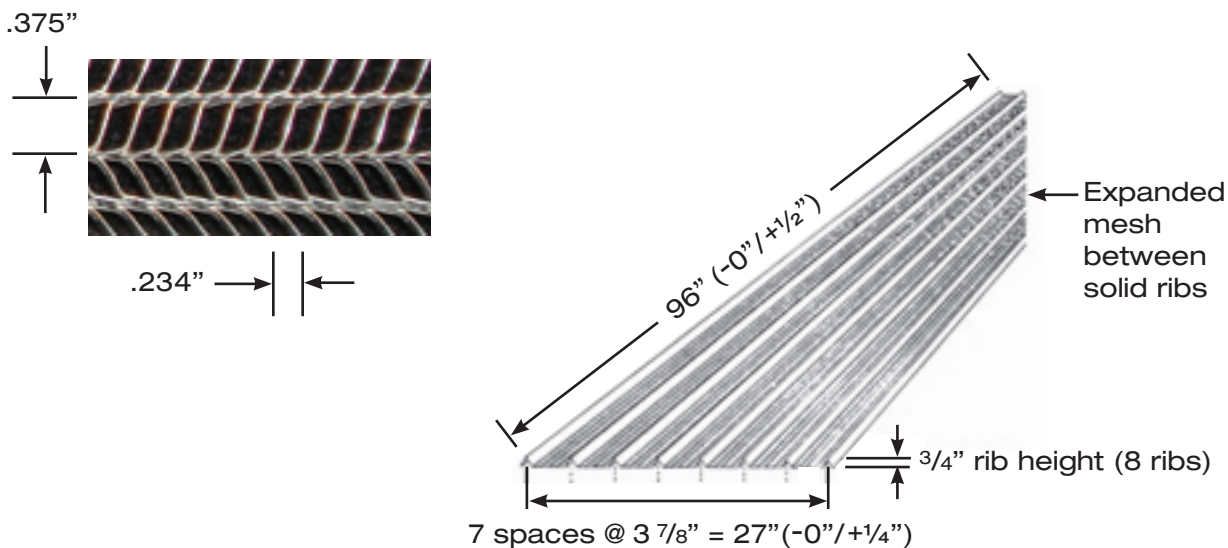
www.amico-stayform.com

PRODUCT INFORMATION

Stay-Form[®] is made from hot-dipped galvanized sheet steel per ASTM-A653

STAY-FORM [®]	#66 - 26 GAUGE
Weight	11.9 lbs. per sheet
V-Ribs	3/4" deep and 3 7/8" on center
Sheet size	27" wide x 96" long* (18 sq. ft. per sheet)
Pallet	250 sheets per pallet (4500 sq. ft.)

**Also available in 10' and 12' lengths*



APPLICATIONS

Pile caps	Grade beams	Dams	Foundations (Windpower)
Blindside walls	Bulkheads	Bridges	Shotcrete
Retaining walls	Keyways	Ductbanks	Tunnels
Footings			

FEATURES & BENEFITS

- Reduced labor cost—no stripping costs (bracing only)
- Lightweight sheets are easy to work with (install, cut, bend, etc.)
- Easy rebar and conduit penetrations
- Visual inspection of concrete pour and consolidation
- Retains surrounding soil while forming below grade structures
- Permits water to run out of formwork during concrete pour

BLINDSIDE WALLS



When a contractor has to form a concrete wall within a few inches of an existing structure, Stay-Form is an excellent product. By utilizing Stay-Form with rebar studs, hook ties, and a modular form system, a one sided form can be accomplished. If you do not have the luxury or room to strip formwork, Stay-Form is the right product for the job.

- The V ribs run perpendicular to the vertical rebar studs which gives the Stay-Form the rigidity to withstand the concrete pressures (*see detail*).
- Stay-Form can be slit with tin snips or grinder to accommodate the rebar hook tie (*see detail*).
- Stay-Form is commonly used for concrete pour rates of 4 to 7 feet per hour.*

To see more examples of blindside wall applications, visit www.amico-stayform.com and click on *Project Photos*.



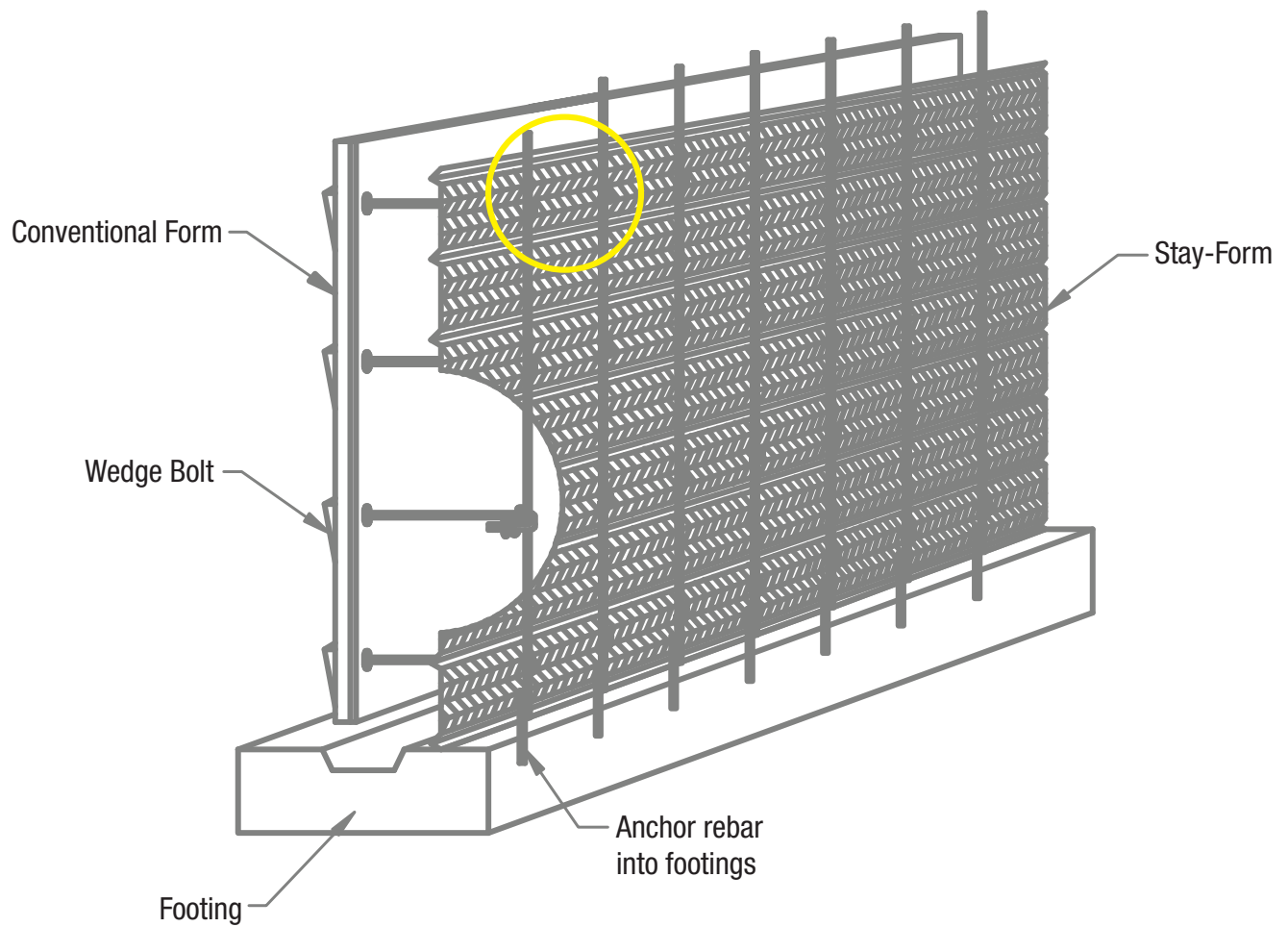
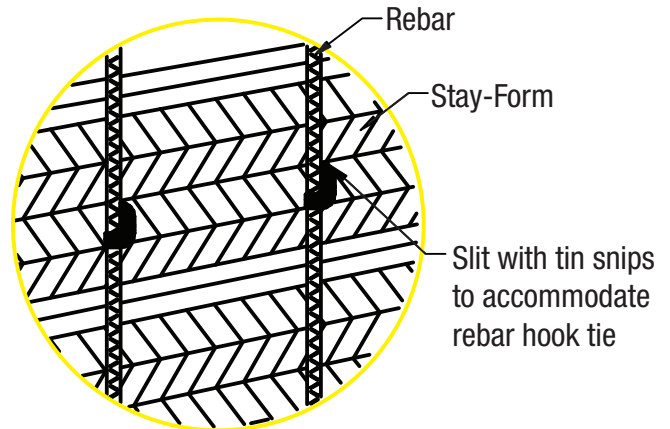
*See *Guidelines for Loading & Bracing Spacings* chart on page 12.

BLINDSIDE WALLS

BLINDSIDE WALL FORM USING STAY-FORM

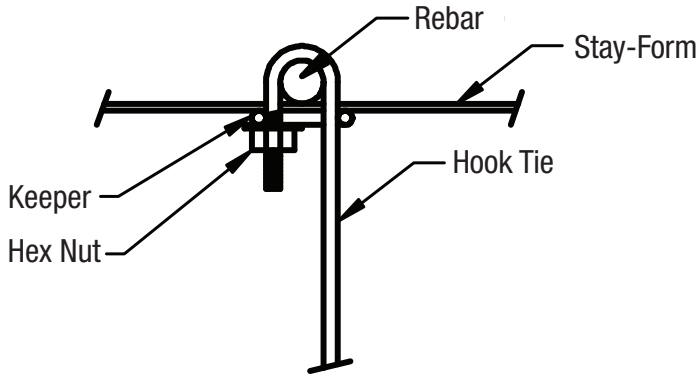
NOTES:

1. Wire tie Stay-Form to rebar every other rib.
2. Lap Stay-Form sheets over a rebar support.
3. Vertical lap (2 ribs minimum)
4. Horizontal lap 4-8" minimum*
5. Recommended pour rate is 4' to 7' per hour.*
6. Do not vibrate previous lift by more than 6".
7. Use 16-gauge tie wire or sheet metal screws where sheets lap.
8. Stay-Form is compatible with self-consolidating concrete.



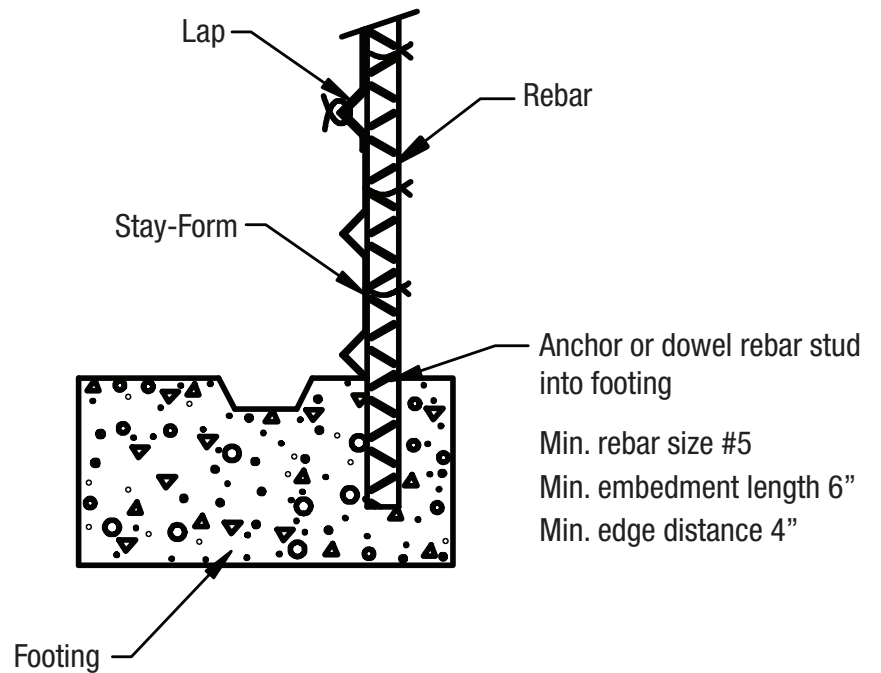
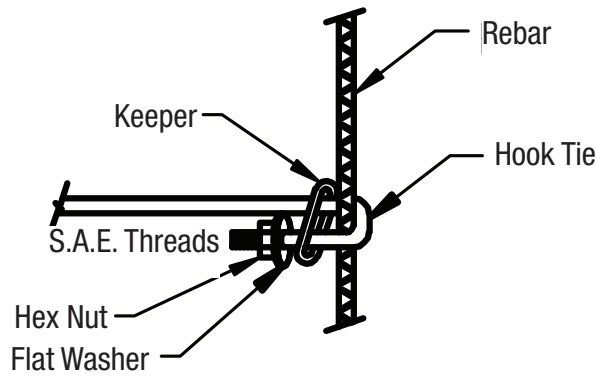
*See *Guidelines for Loading & Bracing Spacings* chart on page 12.

HOOK TIE INSTALLATION FOR BLINDSIDE WALL APPLICATIONS USING STAY-FORM

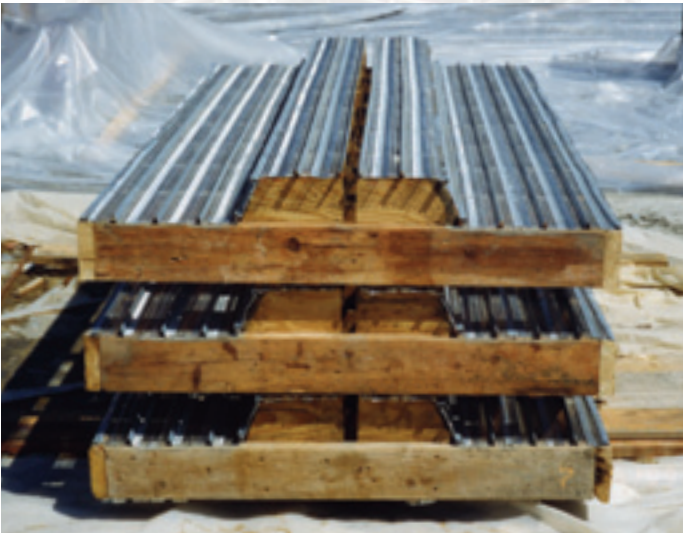


NOTES:

After hook tie has been inserted through the slit in the Stay-Form and engages the rebar stud, a keeper is then secured with a washer and nut.



BULKHEADS

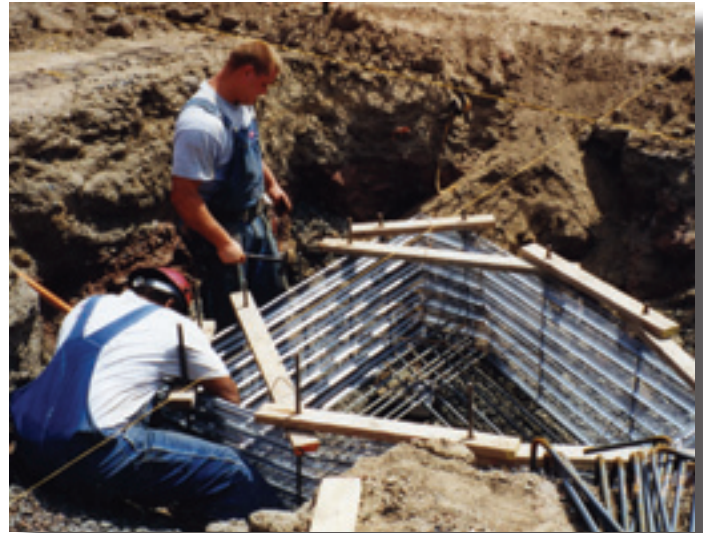
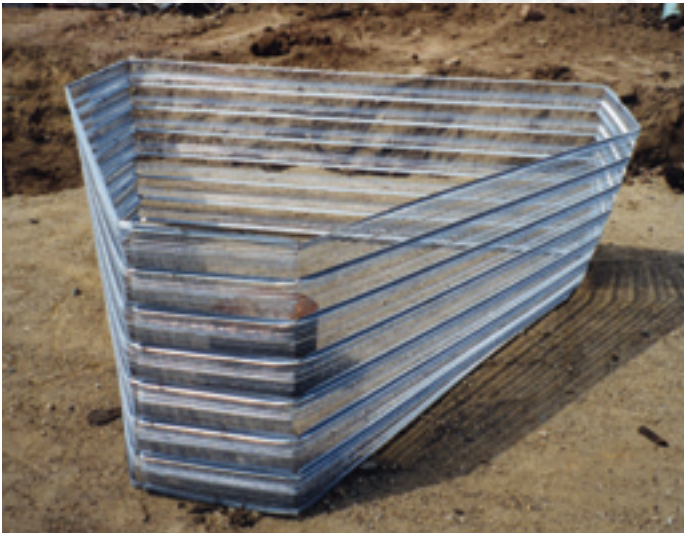


Stay-Form is an excellent product for forming bulkheads because it does not have to be stripped out after the concrete pour. (Plywood and modular forms have to be stripped.) There is also no scabbling required in order to prepare the surface for the next pour.

- Rebar or metal fabricated bracings are left in the pour – no stripping required
- The sheets are lightweight and can easily be bent to form a keyway.
- Stay-Form can be cut in order to accommodate any rebar or conduit penetrations.
- Visual inspection of the concrete consolidation is also accomplished due to the open herring bone mesh.
- Stay-Form provides greater shear bond strengths due to the open mesh and the V ribs (or “mini-keyways”).

To see more examples of bulkhead applications, visit www.amico-stayform.com and click on *Project Photos*.

PILE CAPS



When forming below grade structures like a pile cap, Stay-Form can save a considerable amount of labor. You have no labor for stripping forms. If rebar or metal is used for bracing, it stays in place. (Wood bracing has to be removed.) Some contractors backfill around the Stay-Form prior to the pour therefore they minimize bracing.

- Contractors can cut the V ribs in order to bend the sheets to any geometry.
- During the concrete pour any water in the form will run out of the Stay-Form as it is displaced by the concrete (no pumping it out).
- Concrete finish is not a concern since backfill or a slab-on-grade concrete pour is a typical design with a pile cap foundation.

To see more examples of pile cap applications, visit www.amico-stayform.com and click on *Project Photos*.

GRADE BEAMS



Grade beams are easily formed using Stay-Form and rebar or lumber as bracing. Some contractors prefer to backfill 75 to 90 percent up the grade beam prior to the concrete pour in order to minimize the required bracing. Backfilling acts as the bracing which will stop the formwork from spreading during the pour.

- Using tie wire around the Stay-Form ribs and rebar or lumber is easy to do.
- Since the Stay-Form is not stripped, the excavation required is less than what would be needed using conventional formwork.
- Some contractors use Stay-Form to hold the surrounding soil from falling in on the grade beam excavation and reinforcing steel.



To see more examples of grade beam applications, visit www.amico-stayform.com and click on *Project Photos*.

DUCTBANKS



Electrical contractors find it easier to form ductbanks with Stay-Form than with plywood or conventional forming systems. The learning curve to train personnel how to install Stay-Form is quick, and the labor savings are significant due to the fact that form stripping is not necessary.

- Attaching Stay-Form to rebar supports is easily accomplished with tie wire.
- A 2x4 (from rebar to rebar) across the top of the ductbank prevents the formwork from spreading during the pour.
- Visual inspection of the concrete consolidation is also an advantage when using Stay-Form in order to avoid honeycombing.

To see more examples of ductbank applications, visit www.amico-stayform.com and click on *Project Photos*.

BRIDGES



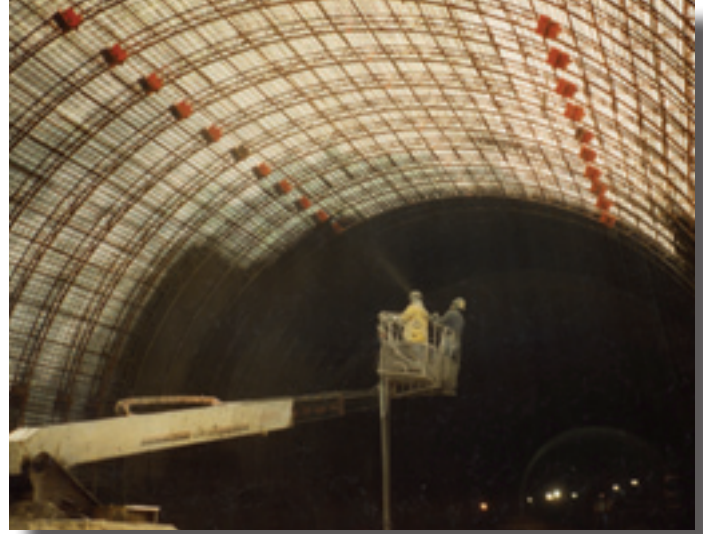
Contractors frequently use Stay-Form on bridge projects to form footings, edge forms and bulkheads. When building a cast-in-place segmental box girder bridge, forming the bulkheads has significant labor savings because the bulkhead does not have to be stripped.

- Test reports prove that when forming a bulkhead, Stay-Form provides 21% greater shear bond strength to concrete than does plywood.
- Unlike plywood-formed bulkheads, Stay-Form bulkheads do not require scabbling of the concrete. This means additional labor savings.



To see more examples of bridge applications, visit www.amico-stayform.com and click on *Project Photos*.

SHOTCRETE



Using Stay-Form as a backstop for shotcrete applications has many advantages. It can be bent to any radius and is easily wire-tied to the reinforcing steel that will form the structure. The open herringbone mesh and V ribs do a great job in catching the shotcrete while minimizing the amount of rebound.

- To visually see both sides of the shotcrete formwork is advantageous.
- The lightweight sheets are user-friendly to install for any shotcrete application.
- Contractors can shotcrete one side of the formwork one day and the other side the following day.



To see more examples of shotcrete applications, visit www.amico-stayform.com and click on *Project Photos*.

TEST DATA

Physical Properties of Stay-Form

DESCRIPTION	STANDARD GRADE #66
Gauge thickness	26
Galvanized Sheet Thickness*	0.0217 in. (0.5512mm)
Sheet Dimensions	27 x 96 in. (686mm x 2438mm)
Weight	0.66 lbs/ft ² (3.22 kg/m ²)
Yield Strength	27.63 ksi (190.50 MPa)
Yield Strain	0.00297
Ultimate Strength	50.28 ksi (346.68 MPa)
Ultimate Strain	0.25
Modulus of Elasticity (E)	29,500 ksi (203,400 MPa)

This data is based on results from testing conducted by an independent testing lab. For more information on the details of the testing, contact AMICO at 800-366-2642.

TEST DATA

Stay-Form, when used for bulkheads, outperforms traditional plywood for shear bond strength by as much as 21%.

Carlson Testing, Inc.

P.O. Box 23814 • Tigard, Oregon 97281 • Phone (503) 684-3460 • Fax (503) 684-0954

Shear Bond Strength (Modified ASTM C482):

TEST AGE	B-MATTE TOTAL LOAD	B-MATTE SHEAR BOND STRENGTH	STAY-FORM TOTAL LOAD	STAY-FORM SHEAR BOND STRENGTH
5/6 day	15,725 lb.	244.6 psi	26,700 lb.	414.9 psi
13/14 day	12,750 lb.	200.3 psi	16,200 lb.	249.7 psi
27/28 day	15,200 lb.	238.9 psi	19,525 lb.	303.9 psi

The 5/6 day shear bond test data indicated that the Stay-Form #66 test was 41% greater than that of the identically cast test specimen using the B-Matte form board material.

The 13/14 day shear bond test data indicated that the Stay-Form #66 test was 20% greater than that of the identically cast test specimen using the B-Matte form board material.

The 27/28 day shear bond test data indicated that the Stay-Form #66 test was 21% greater than that of the identically cast test specimen using the B-Matte form board material.

Guidelines for Loading & Bracing Spacings Stay-Form #66

BRACING SPACING (IN. O.C.)	24"	18"	12"
Lateral Loading (psf)	1200	1200	1600
Liquid Head (ft.)	8	8	10
Pour rate (ft./hour)	4	4	7
Maximum Deflection (in.)	1¼	¾	½
Recommended lap (in.)	8	6	4
Recommended ties at lap (both ribs)	2	2	1

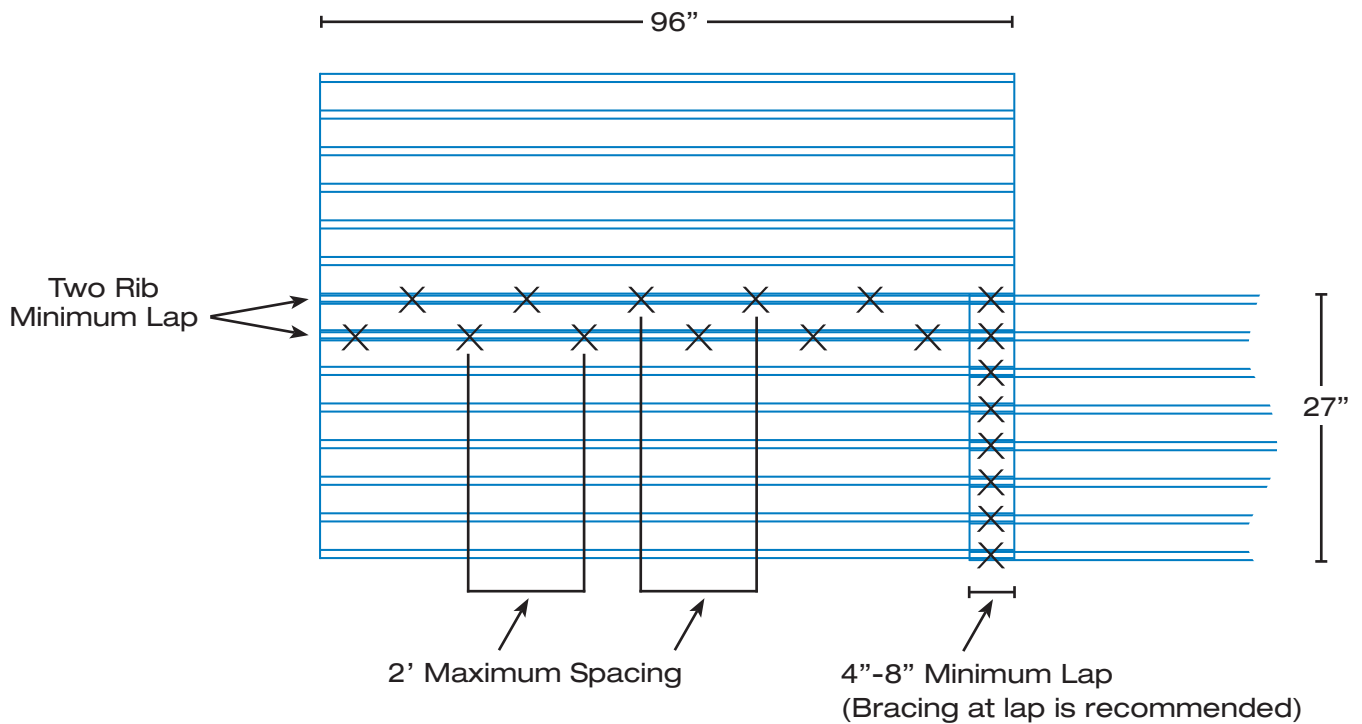
INSTALLATION NOTES

The AMICO rule of thumb is to “brace Stay-Form like you would a piece of plywood.” The use of rebar, strongbacks, walers, kickers, etc. (location, size and spacing) is similar to that for conventional forming methods per ACI 347, Guide to Formwork for Concrete.

NOTES:

- 4”-8” minimum lap between running Stay-Form sheets
- 2-rib minimum lap between stacked Stay-Form sheets
- Tie wire around rib and bracing is recommended.
- Bracing where sheets lap is also recommended.
- Attach Stay-Form to bracing with wire, staples, roofing nails or similar.
- Notch ribs to make 90 degree turns; ribs face into the concrete pour.
- Cut Stay-Form sheets with a grinder, cutoff saw, abrasive blade or tin snips.

STAY-FORM SHEET TIE WIRE LAP DETAIL



NOTE: X denotes 16-gauge tie wire or sheet metal screws

UNITED STATES

Birmingham, AL
800-366-2642

Chicago, IL
800-238-0322

Dayton, TX
800-622-5765

Denver, CO
800-425-5558

Fontana, CA
800-962-0100

Greenville, SC
800-476-4430

Houston, TX
800-433-9945

Lafayette, LA
800-326-8842

Lakeland, FL
800-487-2511

Orem, UT
800-645-0340

Seattle, WA
800-859-5363

Visalia, CA
800-642-4334

Wilmington, DE
800-476-4430

CANADA

Burlington, ON
800-663-4474

Montreal, QC
800-463-3255

Vancouver, BC
800-665-4474

