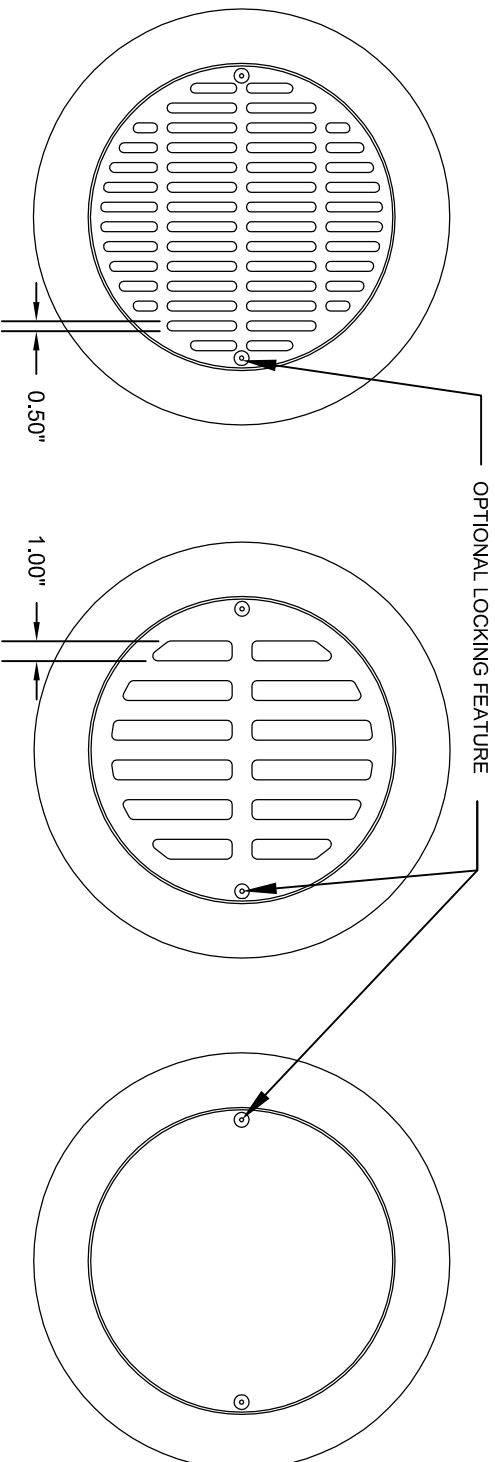


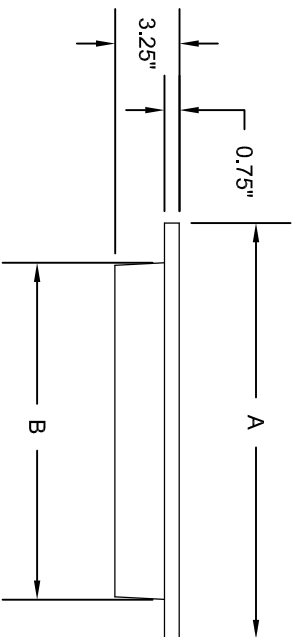
HARCO ROUND GRATE AND FRAME DETAIL



PEDESTRIAN
AVAILABLE 12" - 24"

STANDARD
AVAILABLE 12" - 36"

SOLID
AVAILABLE 12" - 36"



SIZE	A	B
12"	15.5"	11.5"
15"	18"	14"
18"	21"	17"
24"	27"	23"
30"	33"	29"
36"	39.75"	35.75"

STANDARD GRATE HAS H-25 HEAVY DUTY RATING
SOLID COVER HAS H-25 HEAVY DUTY RATING
PEDESTRIAN HAS H-10 MEDIUM DUTY RATING
MATERIAL: DUCTILE IRON GRATE W/ DUCTILE IRON FRAME
MATERIALS SHALL CONFORM TO ASTM A536 80-55-06
PAINT: CASTINGS ARE FURNISHED WITH BLACK PAINT
OPTIONAL LOCKING DEVICE: $\frac{3}{8}$ " X 2" FHCS - USE $\frac{7}{16}$ " ALLEN WRENCH



THE HARRINGTON CORPORATION

TITLE		DRAWING NO.		REV	
12"-36" ROUND GRATE AND FRAME DETAIL		2013-002			
SCALE		DATE			
N/A		2-12-13			
DRAWN BY		CHKD BY			
JBF		JP			
TOL		SHEET			
SIZE		SHEET			

IMPORTANT: The property of THE HARRINGTON CORP and contains confidential information which is not to be used in whole or in part for any purpose other than for which it was specifically furnished. The drawing is to be returned to HARRINGTON upon demand.