



Z882

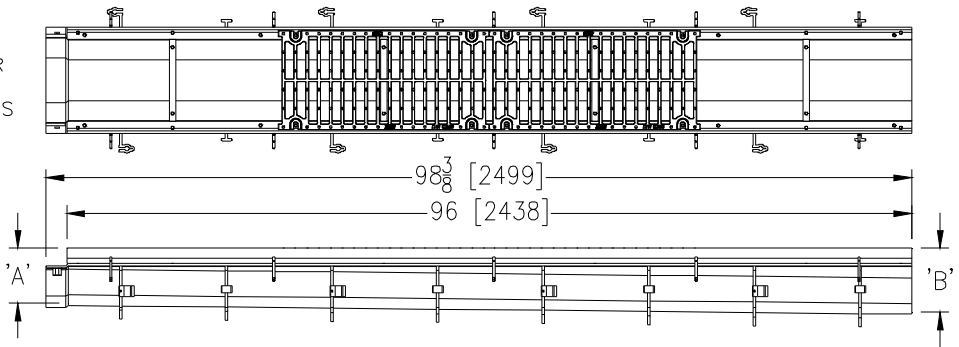
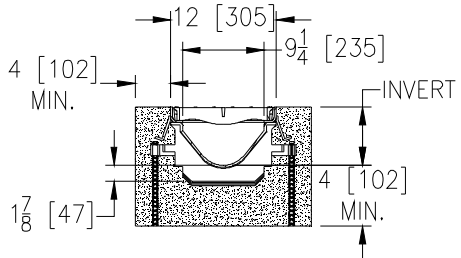
SPECIFICATION SHEET

12 [305] WIDE REVEAL TRENCH DRAIN SYSTEM WITH STEEL FRAME

TAG _____

Dimensional Data (inches and [mm]) are Subject to Manufacturing Tolerances and Change Without Notice

SPECIFYING ENGINEER IS RESPONSIBLE FOR CONCRETE ENCASEMENT AND REINFORCING BASED UPON APPLICATION AND LOCAL CODES



Note: + Actual Channel length is 98 3/8 [2499] to allow for overlap.

ENGINEERING SPECIFICATION: Zurn Z882

Channels shall be 96 [2438] long, 12 [305] wide reveal and have a 9-1/4 [235] throat. Modular channel sections shall be made of 0% water absorbent High Density Polyethylene (HDPE). Shall have a positive mechanical connection between channel sections that will not separate during the installation and shall mechanically lock into the concrete surround every 12 [305]. Channels shall weigh less than 5.05 lbs. [2.29kg] per linear foot, have a smooth, 3 [76] radiused self cleaning bottom with a Manning's coefficient of 0.009 and 1.04% or neutral 0% built in slope. Channels shall have rebar clips standard to secure trench in its final location. Shall be provided with standard DGC grates that lock down to frame. Zurn 12 [305] wide reveal Ductile Iron Slotted Grate conforming to ASTM specification A536-84, Grade 80-55-06. Ductile Iron grate is rated class C per the DIN EN1433 top load classifications. Supplied in 24 [608] nominal lengths with 13/16 [21] wide slots, and 1-1/2 [38] bearing depth. Grate has an open area of 57.50 sq. in per ft. [121708 sq. mm per meter]. The 1/4 [6] thick Heavy-Duty Carbon Steel Frame Assembly conforms to ASTM specification A36 with 10 - 4 [102] long concrete anchors per 96 [2438]. Grate lockdown bars are to be integral to the frame. The frame is supplied with a powder coated finish. All welds must be performed by a certified welder per ASTM standard AWS D1.1. Frames Shall be produced in the U.S.A.

PREFIX OPTIONS (Check/specify appropriate options)

- Z Eight-foot High Density Polyethylene (HDPE) Channel, Heavy-Duty Frame with Anchor Studs.*

SUFFIX OPTIONS (Check/specify appropriate options)

Outlet Adapters Add/Each

- E1 Closed End Cap
- E4 4 [102] No-Hub End Outlet
- E6 6 [152] No-Hub End Outlet
- E8 8 [203] No-Hub End Outlet
- U4 4 [102] No-Hub Bottom Outlet
- U6 6 [152] No-Hub Bottom Outlet
- U8 8 [203] No-Hub Bottom Outlet

Grate Options (Load Classifications are per DIN EN1433)

- BDC Black Acid Resistant Epoxy Coated Ductile Grate - Class C
- BDE Black Acid Resistant Epoxy Coated Ductile Grate - Class E
- DC Ductile Iron Solid Cover - Class C
- DGC Ductile Iron Slotted Grate - Class C*
- DGE Ductile Iron Slotted Grate - Class E
- DGF Ductile Iron Slotted Grate - Class F
- GDC Galvanized Ductile Slotted Grate - Class C
- GDE Galvanized Ductile Slotted Grate - Class E
- GDF Galvanized Ductile Slotted Grate - Class F
- GHPD Galvanized Heel-Proof Ductile Grate - Class B
- GHPDE Galvanized Heel-Proof Ductile Slotted Grate - Class E
- HPD Heel-Proof Ductile Slotted Grate - Class B
- HPDE Heel-Proof Ductile Slotted Grate - Class E

Miscellaneous Options

- CBF Black Acid Resistant Coated Top Frame

MADE in the U.S.A.

- ADA-USA Meets Americans with Disabilities Act Requirements - Class C
- BG Galvanized Steel Bar Grate - Class D
- DGC-USA Ductile Iron Slotted Grate - Class C
- DGE-USA Ductile Iron Slotted Grate - Class E
- FG Fabricated Galvanized Steel Slotted Grate - Class A
- FS Fabricated Stainless Steel Slotted Grate - Class A
- GADA-USA Galvanized Ductile ADA Slotted Grate - Class C
- GDC-USA Galvanized Ductile Slotted Grate - Class C
- GDE-USA Galvanized Ductile Slotted Grate - Class E
- GG Fiberglass Grate - Class A
- PG Perforated Galvanized Steel Grate - Class A
- PS Perforated Stainless Steel Grate - Class A

Miscellaneous Options (cont.)

- JC Joint Connector
- SW Sidewall Extensions - 11 [279] High
- SW2 Double Sidewall Extensions - 22 [559] High
- VP Vandal-Proof Lockdown

Trench No.	'A'		'B'		Flow		
	Shallow Inv.	Deep Inv.	Shallow Inv.	Deep Inv.	(cfs)	(gpm)	(lps)
8201	6.25 [159]	7.25 [184]	7.25 [184]	8.25 [210]	1.241	557	35
8202	7.25 [184]	8.25 [210]	8.25 [210]	9.25 [235]	1.725	774	49
8203	8.25 [210]	9.25 [235]	9.25 [235]	10.25 [260]	2.226	999	63
8203N	9.25 [235]	10.25 [260]	10.25 [260]	11.25 [286]	-	-	-
8204	9.25 [235]	10.25 [260]	10.25 [260]	11.25 [286]	2.745	1232	78
8205	10.25 [260]	11.25 [286]	11.25 [286]	12.25 [311]	3.271	1468	93
8206	11.25 [286]	12.25 [311]	12.25 [311]	13.25 [337]	3.808	1709	108
8206N	12.25 [311]	13.25 [337]	13.25 [337]	14.25 [362]	-	-	-
8207	12.25 [311]	13.25 [337]	13.25 [337]	14.25 [362]	4.347	1951	123
8208	13.25 [337]	14.25 [362]	14.25 [362]	15.25 [387]	4.893	2196	139
8209	14.25 [362]	15.25 [387]	15.25 [387]	16.25 [413]	5.443	2443	155
8209N	15.25 [387]	16.25 [413]	16.25 [413]	17.25 [438]	-	-	-
8210	15.25 [387]	16.25 [413]	16.25 [413]	17.25 [438]	5.996	2691	170
8211	16.25 [413]	17.25 [438]	17.25 [438]	18.25 [464]	6.551	2940	186
8212	17.25 [438]	18.25 [464]	18.25 [464]		7.106	3189	202

Miscellaneous Options

- DB Bottom Dome Strainer

REV. C DATE: 7/15/11 C.N. NO. 121592
DWG. NO. 301672 PRODUCT NO. Z882

*REGULARLY FURNISHED UNLESS OTHERWISE SPECIFIED

ZURN INDUSTRIES, LLC ♦ SPECIFICATION DRAINAGE OPERATION ♦ 1801 Pittsburgh Ave. ♦ Erie, PA 16514

Phone: 814/455-0921 ♦ Fax: 814/454-7929 ♦ World Wide Web: www.zurn.com

In Canada: ZURN INDUSTRIES LIMITED ♦ 3544 Nashua Drive ♦ Mississauga, Ontario L4V1L2 ♦ Phone: 905/405-8272 Fax: 905/405-1292